

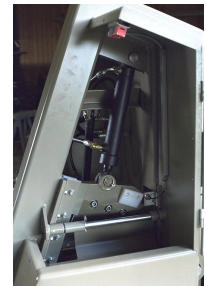
## hk 35/10

Scanhugger HK 35/10 is ideally suited for locating in the factory right at the source of the waste. Operating inline with a gang saw, straight line rip saw or panel saw. Using a closed looped hydraulic system, the knife is continuously cycling. The cut length is set by an adjustable gate.

Scanhugger HK35/10 guillotine er ideel til placering i forbindelse med plade- opskæringssave og lange fraskær fra opskæring af massivt træ. Kniven foretager en kontinuerlig bevægelse og kaplængden er instillelig.



[ service access ]



[ internal view ]

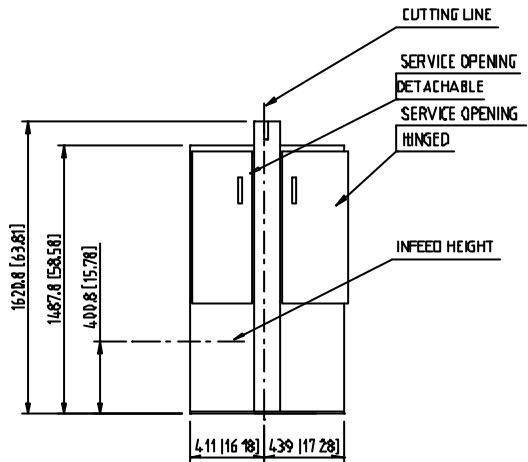
### Technical data / Tekniske data.

Infeed height/width / <i>Indføeringsmål</i>		330 x 80 mm
No.of knives / <i>Knivantal</i>		1
No.of counterknives / <i>Modstål</i>		1
Knife cycles / <i>Antal snit</i>	**	15 - 25 per min.
Infeed speed / <i>Indføeringshastighed</i>	**	6-12 m/min.
Hydraulic motor / <i>Hydraulik motor</i>	**	4-11kW
Cutting length / <i>Kaplængde</i>		100-300 mm
Capacity / <i>Kapacitet</i>	**	3-5 cbm/hr.
Weight / <i>Vægt</i>		750 kg.
Sound level / <i>Lydtrykniveau L<sub>pa</sub></i>	***	78.5 dB

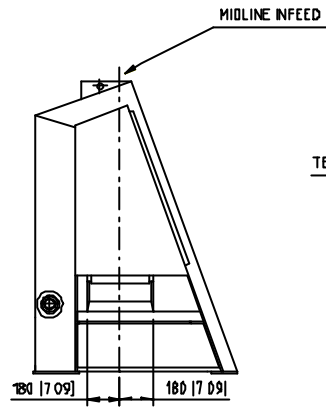
\*\* Depending on motor size and material

\*\*\* In accordance with ISO/DIS 11204, prEN 691

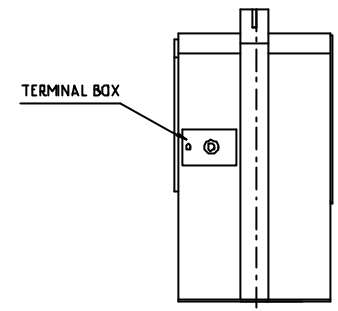
Technical alterations reserved / *Ret til tekniske ændringer forbeholdes*



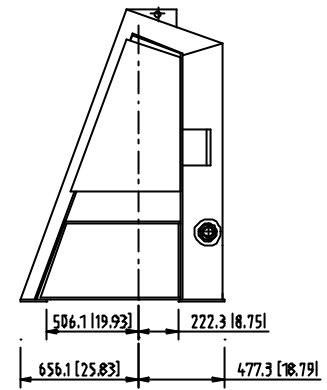
RIGHT SIDE VIEW



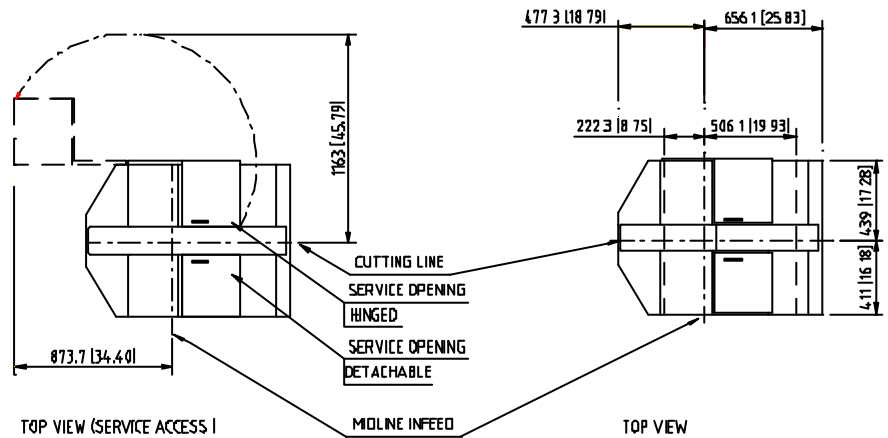
INFEEED VIEW



LEFT SIDE VIEW

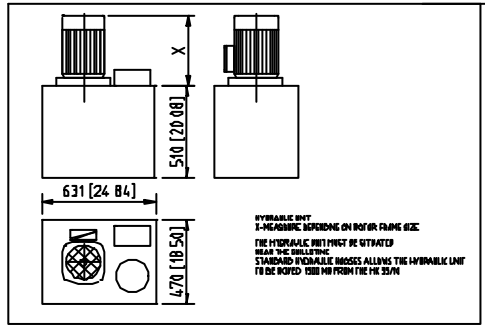
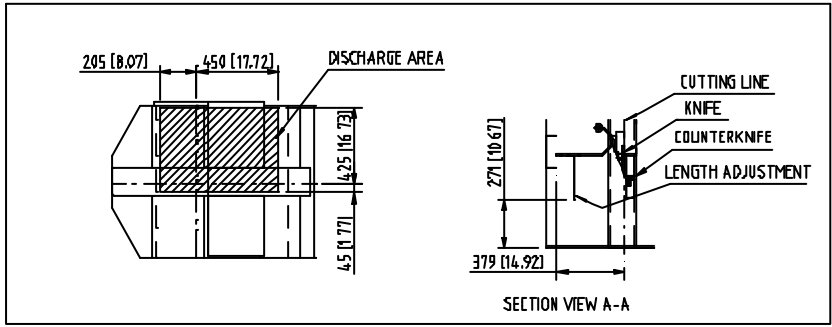
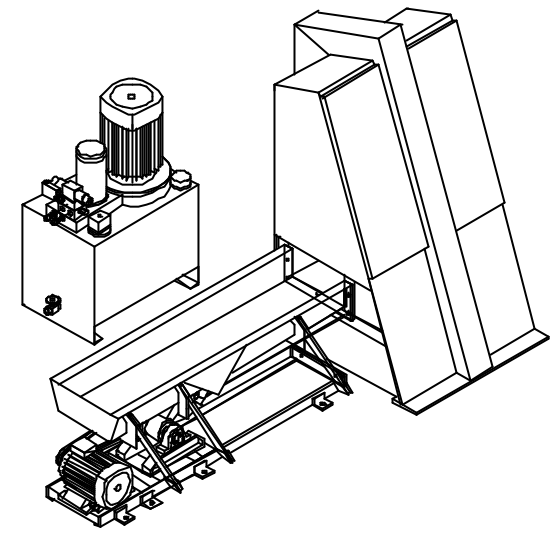


DISCHARGE VIEW



TOP VIEW (SERVICE ACCESS I)

TOP VIEW



STANDARD LAYOUT DRAWING FOR HK 35/10 GUILLOTINE  
 ALL DIMENSIONS IN MM (INCH)  
 HYDRAULIC MOTOR  
 CONTROL VOLTAGE:  
 INFEEED CONVEYOR SYSTEM  
 DISCHARGE CONVEYOR SYSTEM

ALL TECHNICAL ALTERNATIVES RESERVED.

Proj. n°	Mpl.	Benvenuto	Formal	Scala	Denominazione	Revisione
Nome	Seg.				Disegnato	Disegnato
					Titolo	Disegnato
					HEDETRE A/S CEC 05848 IMPERATRICE 2012 0714 20.33 2022 0714 20.33	